



FRIENDS OF THE PANHANDLE PATHWAY, INC.

The Panhandle Pathway is a 21 mile linear non-motorized recreational trail that was developed on the old A & R Railroad corridor. It runs between Winamac and Kenneth, Indiana (approximately 1 mile west of France Park), passing through the towns of Star City, Thornhope, and Royal Center.

MORE ABOUT THE PROJECT

Funding for the project has been provided through grants from the federal Recreational Trails Program and from the Indiana Department of Natural Resources.



JOIN US!

We invite you to join the Friends of the Panhandle Pathway, Inc. Friends have the opportunity to: a) receive newsletters and notices of meetings, gatherings, and pathway activities, and b) take an active role in bringing this Pathway to your community.

The success of the Pathway is dependent on volunteers like you. Donations go toward land surveys, fencing, trail development, and maintenance. Donations may be tax deductible. To learn more about our non-profit organization, check out the website at

www.panhandlepathway.org.

P.O. Box 153
Winamac, IN 46996



**2nd Annual
Panhandle Bicycle
Cruise**

*Saturday
September 10, 2011*

*Registration & Start Location:
Corner of Main & Judson Street
Star City, Indiana*

Main Sponsor:
Larry Kreighbaum
(Friend of the
Panhandle Pathway)

www.panhandlepathway.org

What is the Panhandle Cruise?

The Panhandle Cruise is an annual one-day, 8, 10, 26, 32, or 42 mile bicycle tour on the newly completed picturesque Panhandle Pathway. It is not a bicycle race. It is intended that all participants ride the pathway in a safe and intelligent manner.

All rides will begin at the corner of Main and Judson Street in Star City, Indiana.

Departure Time-Participants who wish to ride the 32 or 42 mile route, must start no later than 1:00 p.m. Participants who wish to ride the 8, 10, or 26 mile route must start no later than 3:00 p.m.

Safety is our primary concern. Riders must utilize proper etiquette and obey all traffic and safety regulations. Make sure your bike is in good working order. **Helmets required.** For maintenance assistance during the ride, call Jerry Anspach at 574/270-0332.

Parking:

There is ample parking on Division Street in Star City. Watch for signs.

Registration:

Participants are asked to pre-register by completing this form by August 22, 2011. The pre-registration fee is \$12.00 and includes a long sleeve t-shirt, and a sandwich and drink at Cooter's in Star City. Late registration (after August 22) is \$15.00. T-shirts, sandwiches, and drinks may be available on a limited basis, but not guaranteed.

For More Information:

Contact Jerry Anspach at 574/270-0332.

FRIENDS OF THE PANHANDLE

—PRESENT—

SECOND ANNUAL PANHANDLE CRUISE

SATURDAY, SEPTEMBER 10, 2011

REGISTRATION: 11:30 A.M.-3:00 P.M.

START TIME: NOON--1:00 P.M. FOR 32 & 42 MILE RIDES

START TIME: NOON--3:00 P.M. FOR 8, 10, & 26 MILE RIDES

Join us for our second annual Panhandle Bicycle Cruise. Registration begins at 11:30 a.m. Signs will be located on U.S. 35 and throughout Star City to direct you to the start location.

Maps will be provided for the various ride options during registration.

—RIDE OPTIONS—

8 Mile-Star City to Thornhope (return to Star City)

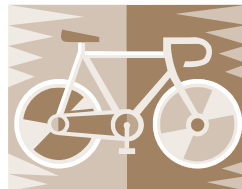
10 Mile-Star City to Winamac (return to Star City)

26 Mile-Star City to Royal Center (return to Star City)

32 Mile-Star City to Kenneth (end of trail & return to Star City)

42 Mile-Star City to Kenneth; back to Winamac (return to Star City)

Once you return to Star City, Cooter's restaurant will be serving sandwiches and drinks (included in the registration). There is no rain date and no refunds will be issued. Mechanical support will be available from *Breakaway Bike Shop*. Proceeds from this event will be used to benefit the Panhandle Pathway trail maintenance fund.



REGISTRATION

Name _____

Address _____

City/State/Zip _____

Phone Number _____

Email Address _____

In signing this form for myself or the above name participant, I understand and agree to absolve all sponsors, organizers, and associated entities, the Friends of the Panhandle Pathway, be they individuals or organizations, singly and collectively, of all blame for any injury, misadventure, harm, or loss or inconvenience suffered as a result of taking part in the bicycle ride or any activity associated with this event.

Signature: _____

(If participant is under 18, a parent or guardian must sign.)

*Pre-Registration (by August 22)

\$12.00-Includes long sleeve t-shirt, and a sandwich and soft drink at Cooter's in Star City during the cruise. Riders under age 10 free, no t-shirt.

*Late Registration (after August 22)

\$15.00-Long sleeve t-shirt, sandwich and drink at Cooter's in Star City may be available on a limited basis, but not guaranteed.

Adult T-Shirt Size (check one)

Small__ Medium__ Large__ X-Large__ XXL__

One form per person. Photocopies are acceptable.

Make checks payable to:

Friends of the Panhandle Pathway Inc.

PO Box 153, Winamac IN 46996

